



## Medium Chess Puzzle # 0052

By

G Bud Games  
<https://gbud.in>

October 25, 2021

## Contents

<b>Medium Chess puzzle # 0052 - Gain queen</b>	<b>3</b>
Medium chess puzzle 0052 . . . . .	3
Solution to medium chess puzzle 0052 . . . . .	4
Solution 1 . . . . .	4
Right moves for the solution to the medium chess puzzle 0052	6
Explanation for the moves . . . . .	6
Categories of medium chess puzzle 0052 . . . . .	6
How to view the solution to medium chess puzzle 0052 . . . . .	7
How to get help for moves in the medium chess puzzle 0052 . . . . .	7
Play chess for free . . . . .	9

## List of Figures

1	Solve this medium chess puzzle 0052. Gain queen @ <a href="https://gbud.in/gh7f6j2">https://gbud.in/gh7f6j2</a> . . . . .	3
2	Solve this medium chess puzzle online with solution @ <a href="https://gbud.in/gh7f6j2">https://gbud.in/gh7f6j2</a> . . . . .	3
3	Initial board position of medium chess puzzle 0052 . . . . .	4
4	Rd8+ - This is a deflection sacrifice to force the rook to move from e8 from where it is supporting a queen. . . . .	5
5	Rxd8 - Opponent's rook captures your rook as this is the only legal move available. This is also a zugzwang move . . . . .	5
6	Qxe2 - Since support to the queen is removed, you have captured the opponent's queen with out losing your queen . . . . .	6
7	Click the solution button to view solutions @ <a href="https://gbud.in/gh7f6j2">https://gbud.in/gh7f6j2</a> . . . . .	7
8	Click the help button to get help on next move @ <a href="https://gbud.in/gh7f6j2">https://gbud.in/gh7f6j2</a> . . . . .	8
9	Solve more medium puzzles @ <a href="https://gbud.in/chsmdpz">https://gbud.in/chsmdpz</a> . . . . .	8
10	Solve other puzzles @ <a href="https://gbud.in/chsgppz">https://gbud.in/chsgppz</a> . . . . .	8
11	Play chess online for free. Solve puzzles and play with friends . . . . .	9
12	Solve this puzzle online by scanning this QR code or go to the link below . . . . .	10

## Medium Chess puzzle # 0052 - Gain queen

Solve this medium chess puzzle and improve your chess games through improvement of your chess strategies and chess tactics.

Puzzle No : 0052

Difficulty level : medium

Description : Gain queen

Next Move : White

Player level : Intermediate

Short URL for puzzle : <https://gbud.in/gh7f6j2>

### Medium chess puzzle 0052

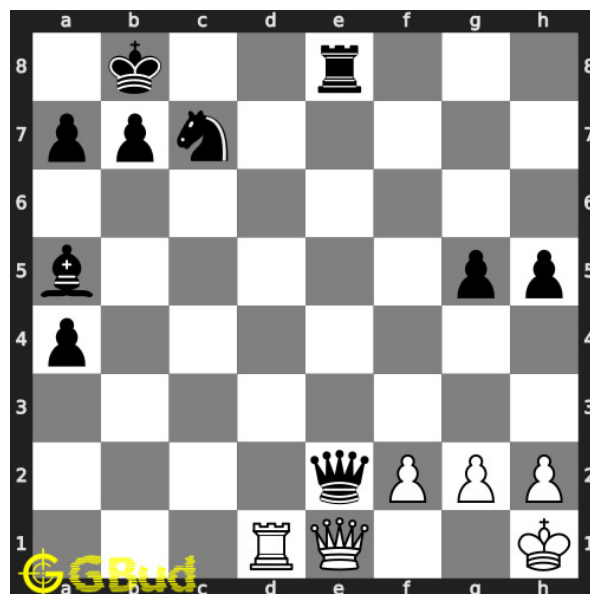


Figure 1: Solve this medium chess puzzle 0052. Gain queen @ <https://gbud.in/gh7f6j2>



Figure 2: Solve this medium chess puzzle online with solution @ <https://gbud.in/gh7f6j2>

## Solution to medium chess puzzle 0052

At this puzzle, next **move** is by **White**. The objective of the puzzle is to gain queen.

See the interactive solution at the [puzzle page](#)

### Solution 1

**Initial board position** This is the initial board position of medium chess puzzle 0052.

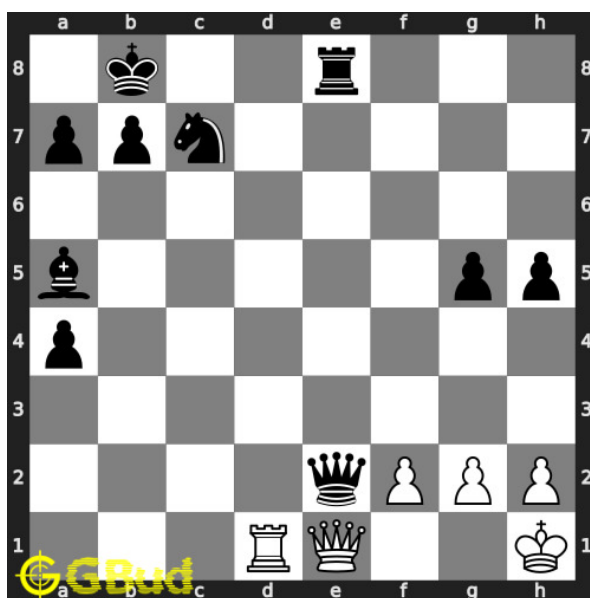


Figure 3: Initial board position of medium chess puzzle 0052

**Move 1** Move by white

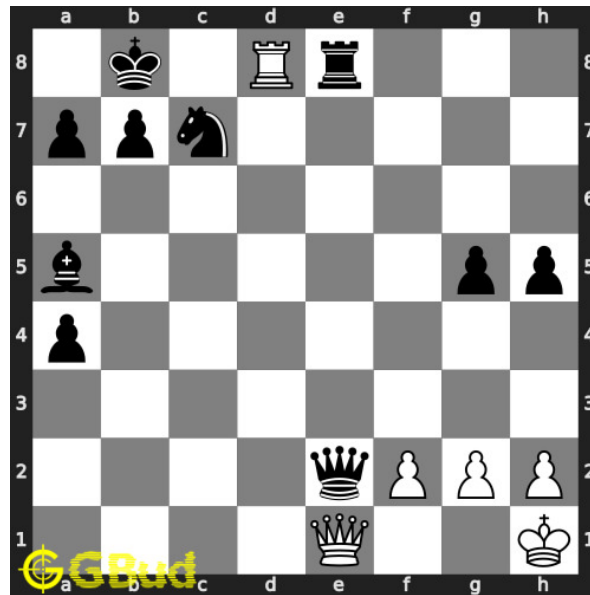


Figure 4: Rd8+ - This is a deflection sacrifice to force the rook to move from e8 from where it is supporting a queen.

**Move 2** Move by black

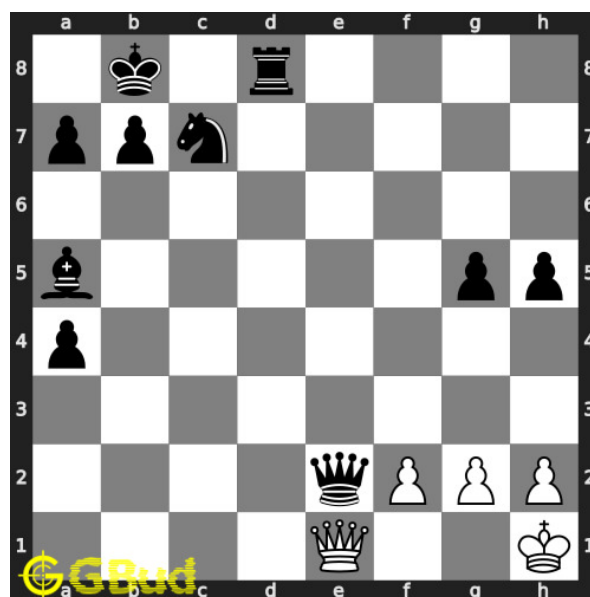


Figure 5: Rxd8 - Opponent's rook captures your rook as this is the only legal move available. This is also a zugzwang move

**Move 3** Move by white

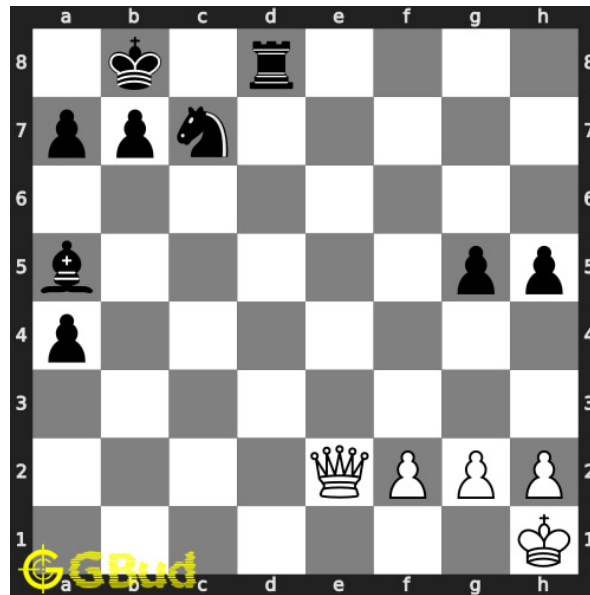


Figure 6: Qxe2 - Since support to the queen is removed, you have captured the opponent's queen with out losing your queen

### Right moves for the solution to the medium chess puzzle 0052

Based on the objective of the puzzle, you have to make the right moves. Following are the right moves

1. Rd8+, Qxe2

### Explanation for the moves

1. Rd8+ - This is a deflection sacrifice to force the rook to move from e8 from where it is supporting a queen.
2. Qxe2 - Since support to the queen is removed, you have captured the opponent's queen with out losing your queen
3. Rxd8 - Opponent's rook captures your rook as this is the only legal move available. This is also a zugzwang move
4. For right move - You have lost a rook but gained a queen. Nice strategy
5. For wrong move - You could have deflected the opponent rook and gained their queen. Try again

### Categories of medium chess puzzle 0052

This medium chess puzzle falls in these categories.

1. [Medium chess puzzles](#)
2. [Sacrifice puzzles in chess](#)
3. [Gain puzzles in chess](#)
4. [Strategy puzzles in chess](#)
5. [Zugzwang puzzles in chess](#)

## How to view the solution to medium chess puzzle 0052

To view the [solution to this puzzle](#), follow the steps given below

1. Go to the [puzzle page](#)
2. Click the solution button (Key as shown [below](#)) to view the solution



Figure 7: Click the solution button to view solutions @ <https://gbud.in/gh7f6j2>

## How to get help for moves in the medium chess puzzle 0052

To get help or the possible next moves in the puzzle, , follow the steps given below

1. Go to the [puzzle page](#)

2. Click the help button (exclamation mark as shown [below](#)) to get help or suggestion on next possible [move](#)



Figure 8: Click the help button to get help on next move @ <https://gbud.in/gh7f6j2>



Figure 9: Solve more medium puzzles @ <https://gbud.in/chsmdpz>



Figure 10: Solve other puzzles @ <https://gbud.in/chsgppz>



## Play chess for free

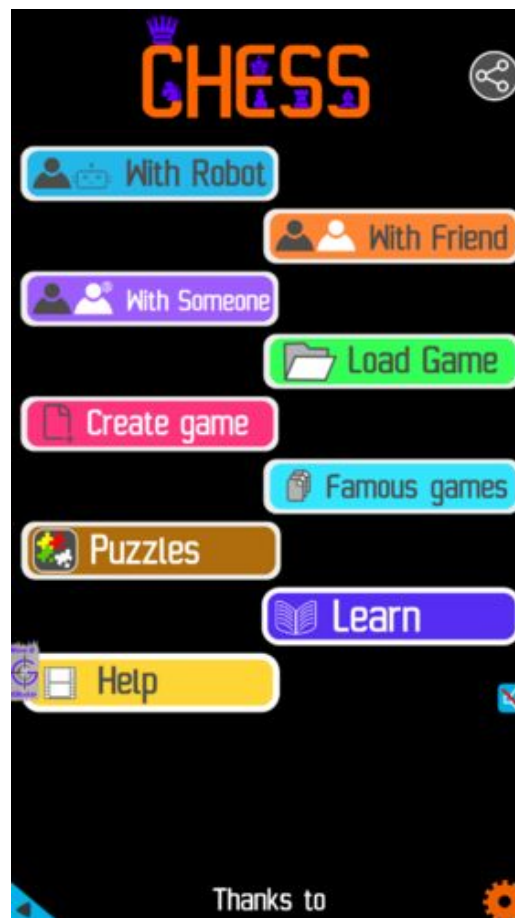


Figure 11: Play chess online for free. Solve puzzles and play with friends

Play chess for free at <https://gbud.in/chs>

We present you a platform to play chess online with friends for free. No need to install any app. You can play chess for free without registration or login.

Simple. You can do several chess related activities.

1. [solve chess puzzles](#)
2. [learn about chess](#)
3. [play chess with computer](#)
4. [play chess with friend](#)
5. [create your own chess games](#)
6. [fen viewer](#)
7. [fen editor](#)
8. [fen generator](#)
9. [pgn viewer](#)
10. [chess board editor](#)

11. [view famous chess games.](#)



Figure 12: Solve this puzzle online by scanning this QR code or go to the link below

<https://gbud.in/gh7f6j2>

Read the latest article on Medium Chess puzzle # 0052 - Gain queen by scanning this QR code or click the link

Previous article : « [Medium Chess puzzle # 0051 - Gain queen](#)

Next article : [Medium Chess puzzle # 0053 - Mate in 2 moves](#) »

[Back to top](#)

[Contact Us](#)

© GBud Games 2021